

# EDS-1G

## Ethernet Delay Simulator 10/100/1000G



### FEATURES / BENEFITS

- ✓ **ATOM D510 Based Hardware Architecture Providing True Line Rate Performance and Repeatable Results / Accuracy**
- ✓ **Very Precise Emulation of Network Delays and Impairments**
- ✓ **Validate and Optimize your Network before Deployment to avoid Costly Application issues**
- ✓ **Interface - Four 10/100/1000 Gigabit Ethernet Interfaces, 2-Paths for independent testing**
- ✓ **Easy to use - 10/100 Ethernet GUI**
- ✓ **Bandwidth - 300bps - 1000Gbps in 1bps increments**
- ✓ **Delay - 0 ms to 8 sec. in 1ms increments, settings for Constant, Uniform and Normal**
- ✓ **Packet Loss - 0 to 100% in increments of 0.001%**
- ✓ **Re-Ordering - Probability & Delay Min/Max**
- ✓ **Queue Depth - Settings for Packets, Kb or Ms**
- ✓ **Background Traffic - 0 to 100% in increments of 0.001%**
- ✓ **Other Features - Roaming Delay Feature, Real time traffic graph, Network Statistics and Framing Overhead Support**
- ✓ **Approvals - UL, CSA, CE, CCC, FCC and RoHS**
- ✓ **1U Sturdy Rack Mount Enclosure, 90-240VAC**

### DESCRIPTION

The EDS-1G is an Ethernet Delay Simulator allowing users to test/stage critical network equipment by altering bandwidth, latency, packet loss, congestion and other important link impairments over 10/100/1000 Ethernet. The EDS-1G can emulate two individual links simultaneously at rates up to 2 GbE, making it ideal for multiple test configurations.

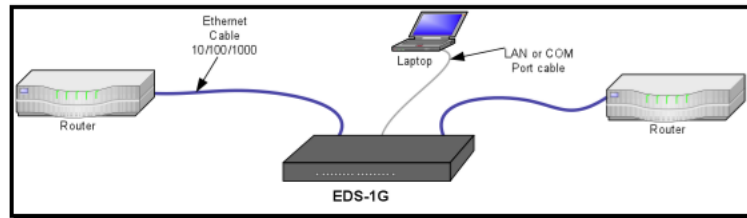
The EDS-1G is a must have test tool for product development / demonstrations, network validation, VoIP, benchmark testing, video / IPTV simulation and website performance.

The EDS-1G hardware based architecture is a powerful Dual Core Intel© Atom D510 Processor and is coupled with custom software presenting an easy to use GUI interface. The EDS-1G operates from a web browser and the user has no cumbersome software or confusing licenses to deal with for secure operation.

The EDS-1G can act as a bridge or a router in the users network. The user configures the unit via the GUI interface using a standard web browser. The GUI is fast and simple to use. All commands and settings are displayed prominently. Simply set the band width, delay and any traffic congestion if required. The user is presented with the results in real time and in a graph.

By using the EDS-1G in place of or in series with a real data link (WAN) a wide variety of error conditions can be introduced under controlled and testable conditions. The unit is an excellent choice for validating and evaluating new products and technologies.

The EDS-1G is housed in a sturdy 1U high metal enclosure which can be rack mounted. It is powered by an integrated 90-240V 50/60Hz power supply. The EDS-1G has a three year warranty and a 24 hour turnaround on warranty repairs.



Typical Application



Front View

**EAST COAST DATACOM, INC.**

# SPECIFICATIONS

## Application

Interconnection of two or four 10/100/1000G Ethernet devices simulating bandwidth, latency, Jitter, packet loss and congestion on two independent LAN channels

## Data Interface

10/100/1000, 1GbE Ethernet, 4-Ports Total  
Two Independent Paths

## Bandwidth

300bps - 1 GbE in 1bps increments, bi-directional or split speed, bps, Kbps, Mbps or Gbp

## Emulated Latency

0 ms to 8 sec. in 1ms increments, settings for constant, uniform or normal

## Packet Loss

0 to 100% in increments of 0.001%

## Re-Ordering

Settings for Probability & Delay Min/Max

## Background Traffic

0 to 100% in increments of 0.001%, settings for LAN Utilization and Bust Size

## Roaming Delay

High and Low Delay coupled with bandwidth over a user defined time period recorded to hard drive

## Queue Depth

User selectable settings for Settings Packets, Kb or Ms

## Framing Overhead Support

User selectable choices for Framing Overhead

## Configuration Ports

Two Independent 10/100 Ethernet Ports

## Front Panel Indicators

LAN Ports and LCD Display

## Surge Protection

Main power supply

## Power Source

AC Mains: 100-240VAC @ 10%, 50/60Hz, 0.16/0.08A, Auto Range

## Environmental

Operating Temperature....32° to 104° F (0° to 40° C)  
Relative Humidity.....5 to 85% Non-Condensing  
Altitude.....0 to 10,000 feet

## Dimensions

Height ..... 1.7 inches (44 mm)  
Width ..... 16.70 inches (426 mm)  
Length ..... 12.60 inches (320 mm)

## Warranty

Three Years, Return To Factory

## Regulatory Approvals

UL, CSA, CE, CCC, FCC and RoHS

## ORDERING INFORMATION

Main Unit Part Number: 207000

Model: EDS-1G

Description: EDS-1G Ethernet Delay Simulator

## INCLUDED WITH EACH UNIT:

- 1) Operations Manual
- 2) U.S.A. Grounded Power Cord, Part # 713015
- 3) Rackmount Kit Ears
- 5) Four Ethernet Cables
- 6) One Ethernet Cross Over Cable

## Optional Power Cords

- A) United Kingdom, Part # 713016
- B) Continental Europe, Part # 713017
- C) Other: Specify Country on Purchase Order

## Other East Coast Datacom Products

RDS-PLUS, Serial Network Latency Simulator  
(Supports all serial interfaces, T1, E1, DS3 ect..)

UDC-ME, Universal Modem Eliminator  
UDC-IC, Universal Interface Converter  
UDC-RA, Universal Rate Adaptor

For further detailed technical information on this product, contact East Coast Datacom, Inc at:  
[support@ecdata.com](mailto:support@ecdata.com)

## EAST COAST DATACOM, INC.

245 Gus Hipp Boulevard, STE 3 • Rockledge, FL 32955-4812 U.S.A.

TEL: (321) 637-9922

WEB SITE: [www.ecdata.com](http://www.ecdata.com)

FAX: (321) 637-9980